

FREE RESOURCES WORTH \$230
✓ TEXTURES ✓ BACKGROUNDS ✓ STOCK IMAGES ✓ ACTIONS ✓ BRUSHES ✓ FONTS



Photoshop® creative

 **THE WORLD'S NO.1 FOR
PHOTOSHOP
& ELEMENTS**

FIX ANY PHOTO

20 TECHNIQUES YOU NEED TO LEARN

- ✓ Enhance portraits
- ✓ Boost colour and tone
- ✓ Mend errors
- ✓ Improve landscape shots



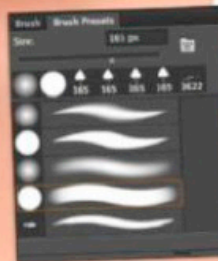
BLEND FANTASY ARTWORK

Master essential techniques for compositing with blend modes, adjustment layers and brushes

MAKE FUN TEXTURES

Top tricks for creating glitter textures to use in projects

Brush away imperfections



Before

Inside! Imaginative typography

Add images to text with clipping masks



Paint-splat people

Apply custom paint splashes to your art



Use layers and masks

Unite textures and photos in Elements



DigitalEdition
GreatDigitalMags.com

ISSUE 139

ip
PUBLISHING

On the FileSilo

Download your free resources at www.filesilo.co.uk/photoshopcreative

Essentials



Time taken
3-4 hours

Expert

John
Ross



"I've always been a firm believer that less is more, and what you don't show can be just as important as what you do show."

"Fashion retouching in Photoshop and making facial features stand out is a matter of knowing which tools to use to achieve the greatest effect. For instance, just a quick pass inside Camera Raw using the Gradient tool can boost the drama by sculpting the light. That creation of dark tonal balances alone already enriches the image and vastly improves it."

"With 20 years of professional experience in the field, I educate photographers and retouchers by expanding their knowledge through my website www.TheArtOfRetouching.com."

Master fashion retouching



Start image

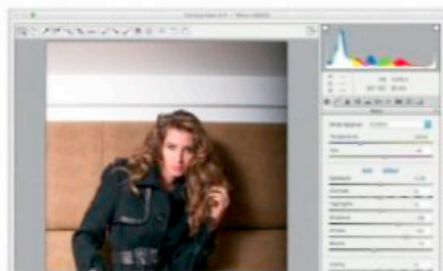
Create intrigue and allure in fashion retouching using subtle cloning, facial adjustments, gradients and pro compositing

Glamour, style, fame – high fashion always has an air of mystery to it. While this irresistible and enigmatic appeal might seem intimidating, fashion retouching really can be achieved with the simplest techniques possible.

With a quick initial pass inside Camera Raw, it's all about knowing the right mix of colour and tonal balance to create the perfect dramatic effect in a photograph, even before you get into Photoshop itself. Subtle is always best, so it's easy to make facial adjustments with controlled Liquify skills, as well as enhance a model's lips and brighten up the

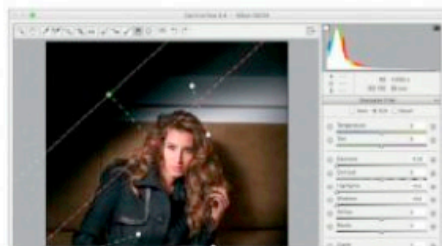
focal point of the eyes. You will also discover the key aspects on how to smooth out imperfections with the Clone Stamp tool and the Healing Brush. Then, it all boils down to compositing backgrounds, and when it comes to combining images professionally, layer masks and blending options can help save the day.

So get ready to snap some photos of fame and fortune, and let your Photoshop retouching magic do the rest. With this handy tutorial, you can enhance any fashion piece, creating a fierce work of art that's worthy of the runway.



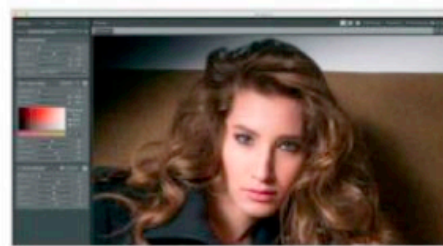
Adjust in Camera Raw first

01 Using Camera Raw works wonders to an image even before you go into Photoshop itself. It lets you open up shadows, adjust highlights, and even manipulate saturation. Just a quick initial pass with the different adjustment sliders can give the image a general colour and tonal balance.



Create intrigue with gradients

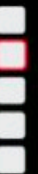
02 Focused spotlight on a model always makes everything intriguing. To apply a targeted darkening around the model, use Camera Raw's Gradient filter and adjust until you find the values that work for you. This gives the image the illusion of a spotlight, which will make the image more visually interesting.



Use Imagenomic Portraiture

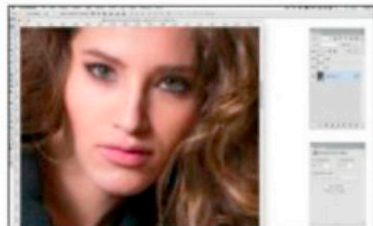
03 Portraiture can create a softened, glowing quality. You may try to achieve the same effect by using a duplicated background, apply Edit>Sharpen>Surface Blur, and a layer mask to reveal only select contrasting areas. But if Portraiture can simplify things, why not? Always use the correct tools for the job when possible.

 Share your fashion portraits **Tweet us @pshopcreative** 



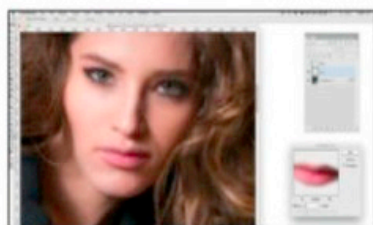
Expert edit

Create kissable lips



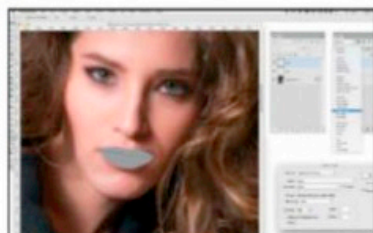
Duplicate the lips

01 The lips deserve some special attention. Begin by making a loose selection around the lips and duplicate them (Cmd/Ctrl+J) twice. Name one layer Low, and the other High.



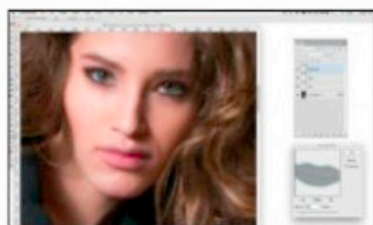
Work on the two lip layers

02 On Low, apply Gaussian Blur. Raise the Radius slider until you lose lip detail. Make the Radius value 6. On High, click Image>Apply Image.



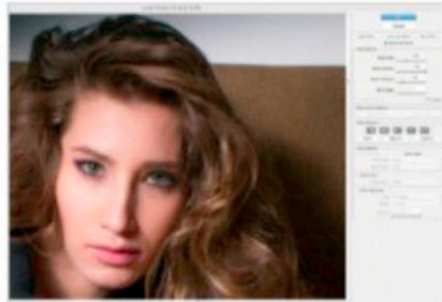
Apply Image dialog

03 Change layer to Low, the blend mode to Add, check Invert, set Scale to 2, Offset: 0 (for 16-bit). For Subtract, uncheck Invert, Scale: 2, Offset: 128 (for 8-bit). Then change the High layer itself to a blend mode of Linear Light.



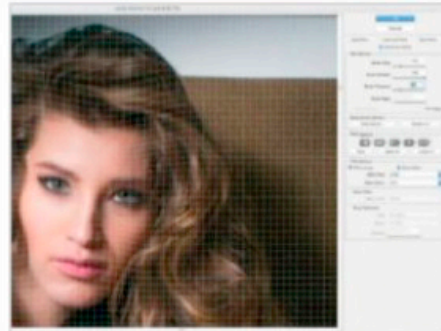
Add more Gaussian Blur

04 With the High layer selected, hit Cmd/Ctrl+J. On this new layer, apply Gaussian Blur with a Radius value of 3. Then, press Cmd/Ctrl+I to Invert.



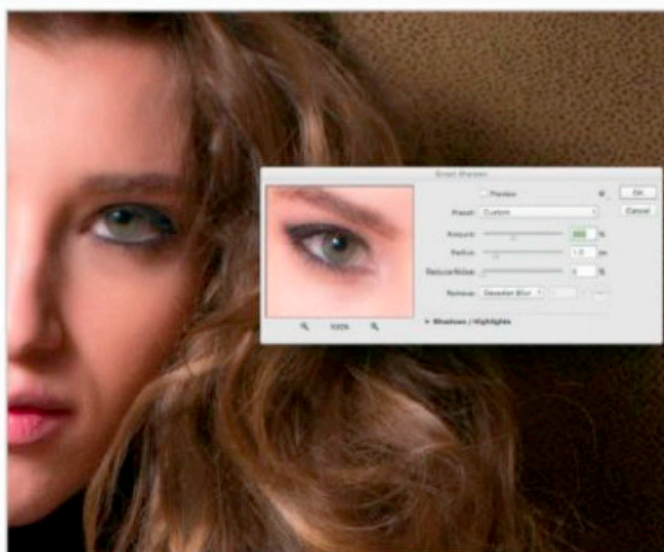
Use Liquify sparingly

04 Filter>Liquify is a powerful tool that can adjust features otherwise difficult to manipulate. Use the tool without going crazy. It can help make subtle adjustments to minimise imperfections during a shoot. Use the Advanced Mode to adjust the Pressure down to around 20.



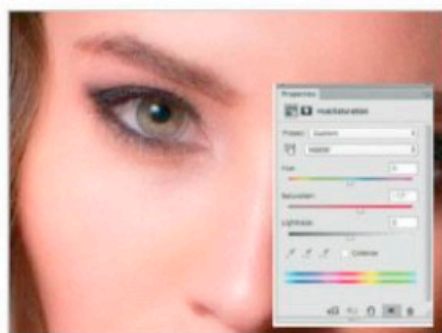
Make subtle facial adjustments

05 Use Liquify on this image for the lips that are off-centre; they can be shifted over. Also, the tilt of the model's head gives the illusion of a very long face. Her chin, lips and nose can be moved up, while the hairline and forehead can be moved down.



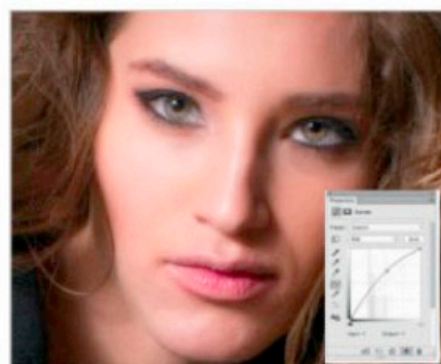
Sharpen the details

06 Eyes need to pack a punch. To emphasise them and make them pop, add Filter>Smart Sharpen with an Amount of 200% and Radius of 1.0. This will not only enhance the eyes, but it will also emphasise fine hairs, as well as other details in the skin.



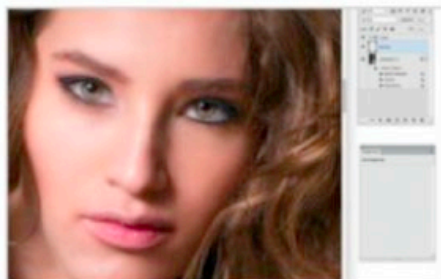
Enhance the eyes

07 You will always want to draw your viewers' attention to a model's eyes, which is why enhancing them is crucial. Use a layer mask to brighten the lower halves with some Curves with a value of Input: 110 and Output: 182, and Hue/Saturation with a value of 17 to enhance the colour.



Whiten the eyes

08 As needed, insert a catch light to add sparkle to the eyes. When it comes to the eye whites, lighten the darker areas with Curves and a layer mask. Be sure not to go too far, or the eyes will look funny. A subtle lighten will do the trick.



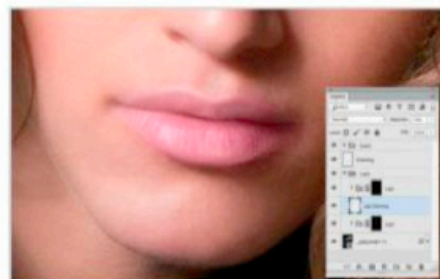
Heal to correct lighting

09 Sometimes, you need to correct imperfections per pixel. Use a relatively small Healing Brush to straighten the shadow on the nose, remove the frown line, and blend the harsh chin. Don't forget the veins of the eyes, too. This takes time, but it prevents unnatural smudges – it's the professional way to go.



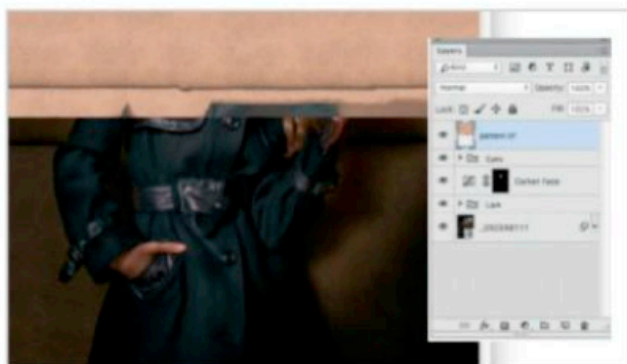
Touch up the skin

10 When it comes to perfecting skin, the Healing Brush works best if you match the colour and tone from the source area with the target area. Remove any blemishes and correct any other lighting issues you see. Any hanging eyelashes, stray hairs or discolourations should be taken care of as well.



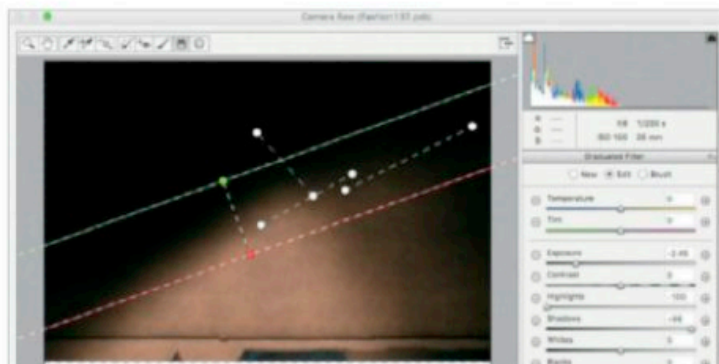
Work on the lips slowly

11 Retouching lips takes patience, visual reference and a lot of brush work. Use a Hue/Saturation adjustment layer and check Colorize. Then use values of Hue: 351, Saturation: 28, and Luminance: 0. On a blank layer, paint in the details of highlights and shadows. There are little shortcuts here, so practice makes perfect.



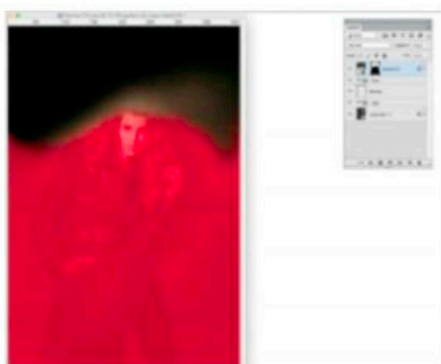
Composite background images

12 It's complex to replace the top white area of this background with an extension of the more interesting backdrop pattern. Open 'pattern.tif' from the FileSilo to cover the top of the image. Then, drag and drop the layer from this new image onto the image with the model.



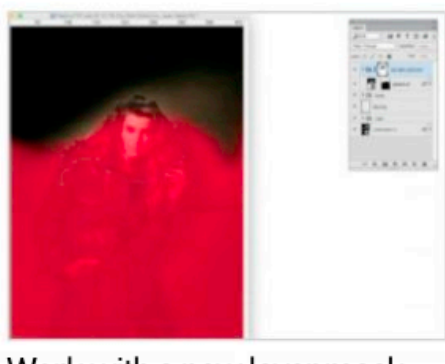
Match backgrounds with gradients

13 Remember that it's often a challenge to composite different images together and still end up with a believable background image. After selecting the pattern.tif layer, right-click and select Smart Object. You can now use the Gradient filter from Filter>Camera Raw to re-create the shadows and match the existing background.



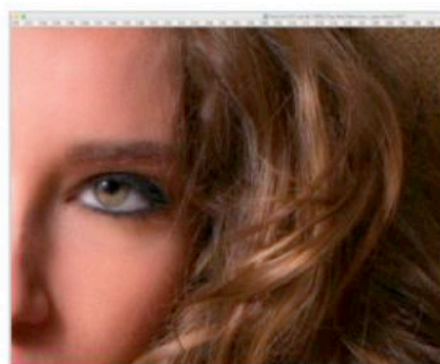
Use the Brush tool to blend

14 At the bottom of the Layers palette, click on New Layer Mask. You can then paint with a black paint brush covering up any areas that you don't want to see, or otherwise want to blend together with the original background.



Work with a new layer mask

15 Sometimes you might want two masks for the same layer. While you can't directly have two masks, what you can do is select the layer and click on the New Group Folder icon at the bottom of the Layers palette. Then, highlight the group folder and click on New Layer Mask.



Remove stray hairs

16 Most images require flyaway hairs to be cleaned up to give a cleaner presentation. However, this image's model has wavy and curly hair. It is very long and playful. You can often get away with minimal, or even no changes to hair like this.

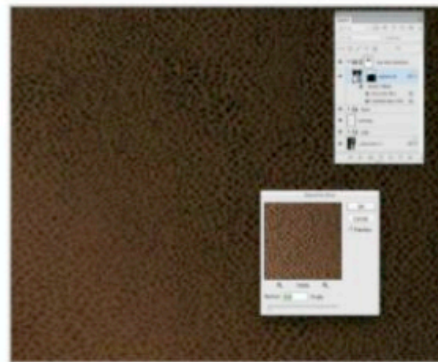


Expert tip



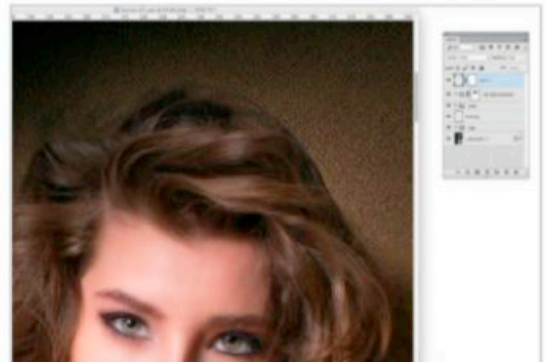
Dark tonal tips

A darker and higher contrasted tonal range in an image yields a mysterious and alluring quality. However, as with all of the possibilities in Photoshop, be wary of doing too much with your effects and dark tones. When dealing with very dark areas, if you use Levels at the top of your layer stack, you can slide the Whites and Midtones to the left and see if there are any areas of inconsistent tones generated as a result of problematic cloning or use of layer masks.



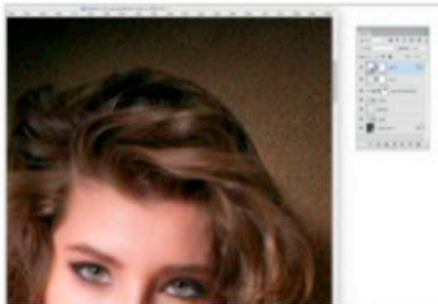
Make it natural

17 Ensure that the combination of images looks naturally blended together. On the pattern.tif layer, add Filter> Blur> Gaussian Blur with a Radius of .5 to soften it a little so that it will better match the original background.



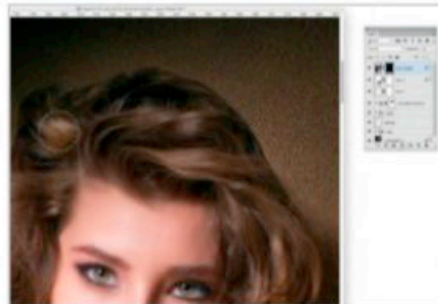
Copy and paste hair

18 To blend the model's hair against the composite background, make a loose selection around the hair (including the white) from the original background, then copy/paste it to a new layer, and place it above the pattern.tif layer. Set this patch of hair to a blend mode of Darker Color and Opacity of 49%.



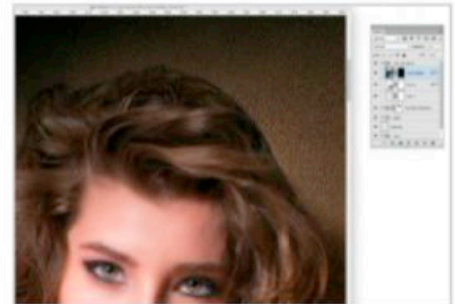
Blend layers

19 Use Cmd/Ctrl+J to duplicate the Hair Patch layer. Afterwards, change the upper layer's blend mode to Multiply, and Opacity to 38%. This will make it easier for you to blend the hair into the background. As we build up these layers, you will see the hair blend into the background.



Create a hair mask

20 Select the background layer, and Cmd/Ctrl+J to duplicate the image layer. Drag it to the top, above the various hair blending layers. Hold down the Cmd/Ctrl key while clicking on the New Layer Mask button. This will give you a black mask, making this duplicated layer visually disappear.



Work on the hair details

21 With the layer mask selected, pick the Brush tool set to white and 20% Opacity. Using a fairly small size of 15% would be good. Slowly paint back in all of the hair's shiny details. With every stroke over an area, it will get brighter. Go slowly and blend together the details with the layers below.

What can go wrong

Fashion retouching's freedom in compositing

Fashion retouching can give you creativity and flexibility. You can have more freedom over the model and backgrounds, as long as the clothing is shown clearly with as much detail as possible. Not only can you use Levels to check for inconsistencies with the White and Midpoint sliders pushed to the left, but you can also place a black-and-white layer on top to check for tonal balance across the image. Tonal consistency is much more important than colour. There is always the danger of having the brightest part of the image being insignificant and distracting. There is also the issue of poor cloning that can lead to repeating or mismatched patterns.

Wrong



Right

